

2021 10 26

2021 12 30

合源® 思源清®

/ ADHD

ADHD

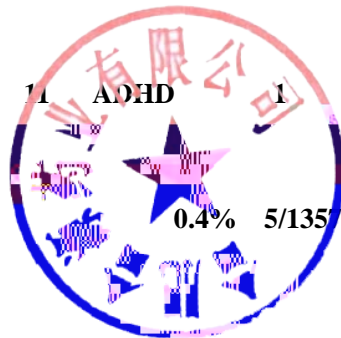
/

12

2200

11 ADHD 11

6 18

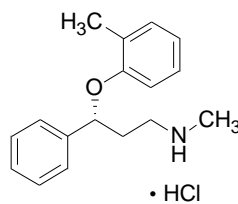


851

Atomoxetine Hydrochloride Capsules

Yansuan Tuomoxiting Jiaonang

- -N- -3- -3- O-



C<sub>17</sub>H<sub>21</sub>NO·HCl

291.82

/ ADHD

25mg( C<sub>17</sub>H<sub>21</sub>NO )

70 -

0.5mg/kg

3

1.2mg/kg

1.2mg/kg/

1.4mg/kg 100mg

70 -

40mg

3

80mg

2 4

100mg



70kg

100mg

/

ADHD

6-15

1.2-1.8mg/kg/

120mg

150mg

-

HI

ADHD

HI

Child-Pugh ClassB

HI

50%

HI

Child-Pugh ClassC

25%

CYP2D6

CYP2D6

Poor metabolizers,PM

_____ -	CYP2D6			CYP2D6 PM
70				0.5mg/kg/ 4
				1.2mg/kg/
	CYP2D6			70
		40mg/	4	
		80mg/		
/				
ADHD	DSM-IV		7	-

2



	2	1
	3	0
	16	4
	3	1
	19	15
c	11	4
	5	2
	2	1

a 2%



2%

b

c

2

18

	BID		QD	
	N=715	N=434	N=882	N=500
a	17	13	18	7
	11	8	11	4
	7	6	13	4
b	2	1	1	0
	6	4	9	2

c	2	0	1	1

a

b Breslow-Day

c Breslow-Day 0.05 P 0.1

2% CYP2D6 PM PM  
 CYP2D6 EM PM 11%,EM 6% PM 7% EM 4%  
 PM 7% EM 4% <sup>1</sup> PM 7%,EM EM 4% PM 5% EM  
 1% PM 4% EM 2% PM 3% EM 1%  
 PM 3% EM 1% PM 3% EM 1% PM 2% EM  
 1% PM 2% EM 1% PM 4% EM 2%

1

----- - 11.3% 61/541

3.0% 12/405 1

0.9% N=5 0.9% N=5 0.6% N=3 0.6% N=3 0.4%

N=2 0.4% N=2 0.4% N=2 0.4% N=2 0.4%

N=2 0.4% N=2

----- -

0.1% 1/748

0/43 0.1% 1/705

----- - 3 2%

5% 2

	3	1
	20	5
	26	6
	8	3
b	7	4
	4	2
	4	2
	10	6
	3	0
	2	1
	5	3
	2	1

f	8	1
g	3	2
f / f	4	1
	4	1
	3	0

a 2%

2%

b  
c  
d  
e  
f  
g



STRATTERA N=743 N=869

STRATTERA N=754 N=691

2% CYP2D6 PM PM

CYP2D6 EM PM 4% EM 1% PM

35% EM 17% PM 11% EM 7% PM 5%, EM 2%

PM 23% EM 15% PM 5% EM 1% PM 19%, EM

11% PM 7%, EM 3% PM 5% EM 3%

PM 3% EM 1% PM 6%, EM 1% PM 21%,

EM 9% PM 6%, EM 2% PM 15% EM 7%

PM 3% EM 1%

\_\_\_\_\_ -QT  
 \_\_\_\_\_ -  
 \_\_\_\_\_ -  
 \_\_\_\_\_ -  
 \_\_\_\_\_ -  
 \_\_\_\_\_ -  
 \_\_\_\_\_ -  
 \_\_\_\_\_ -  
 \_\_\_\_\_ -  
 \_\_\_\_\_ -  
 \_\_\_\_\_ -  
 \_\_\_\_\_ -



ADHD

MAOI

MAOI

MAOI

MAOI

MAOI

15-20mmHg 20 /

/ ADHD

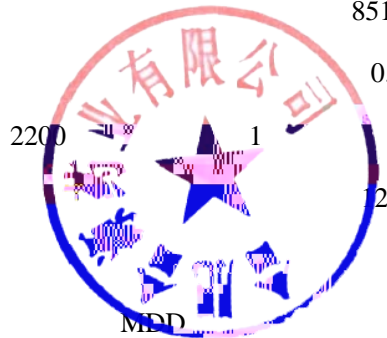
6 18

12 ADHD 11 1 2200

1357

851

0.4% 5/1357



ADHD

MDD

6000

1

“ ”

120

[ 20×

ULN ]

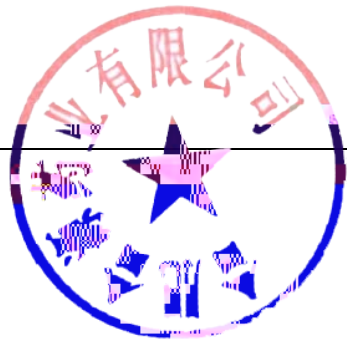
2× ULN

40

12

:

“ ”



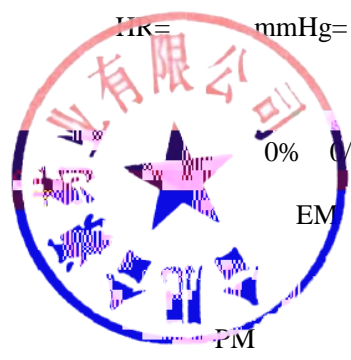
ADHD

:

		15mmHg		20mmHg		20bpm <sup>a</sup>			
		b				b			
		%	%	%	%	%	%	%	%
DBP	15mmHg	21.5	14.1	9.3	4.8	12.6	8.7	4.8	3.5
SBP	20mmHg	12.5	8.7	4.9	3.3	12.4	7.8	4.2	3.2
HR	20bpm	23.4	11.5	12.2	3.8	22.4	8.3	10.2	2.0

<sup>a</sup> :bpm= / :DBP= HR= mmHg= SBP=

<sup>b</sup>



0.3% 5/1597  
 9.4 /  
 EM/PM  
 / 7.5 / PM  
 0.5% 2/402  
 1.5% 8/540  
 EM/PM PM  
 EM 4.21 2.13mmHg , EM PM:2.75  
 EM:2.40mmHg PM  
 0.2% 12/5596 0.8% 46/5596  
 1.8% 6/340  
 0.5% 1/207

0.2% 1939

4

1056

ADHD

:

ADHD

ADHD

21/1308 1.6%

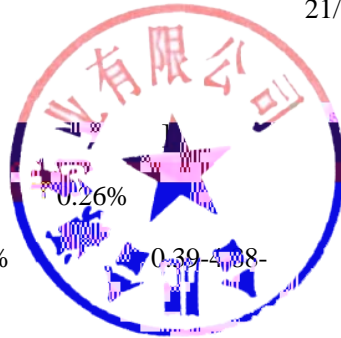
9/806 1.1%

1.33[95% 0.67-2.64-

4/1560 0.26%

6/1697 0.35%

1.38[95% 0.39-4.08-



ADHD

1.7% 9/540

5.6%

30/540

0% 0/402

0.5% 2/402

2

4

9-12  
3 17.9  
0.5 12  
3 19.4 0.4 1

1:

	AUC	10	5	7%	PM	CYP2D6
PM	PM	PM	CYP2D6		PM	

0.8mg/kg/ , 1.2mg/kg/ 1.30mg/kg/  
 ± 0.29mg/kg/ PARS  
 158 26 16%  
 16 18-65 442  
 ADHD DSM-IV 23% 2  
 40mg/ 100mg/ 83mg/ ± 19.5mg/  
 LSAS  
 413 149 36.1%



\_\_\_\_\_ -

\_\_\_\_\_ -

“ ”

\_\_\_\_\_ -

\_\_\_\_\_ -

4

\_\_\_\_\_ -

\_\_\_\_\_ -

—

—

24

24

—————

—

2-4% 15-20%

—



6

MAOI

**CYP2D6**

EM CYP2D6  
PM  
EM AUC 6 8 C<sub>ss</sub> C<sub>max</sub> 3 4  
PM P450

2

600mcg 2

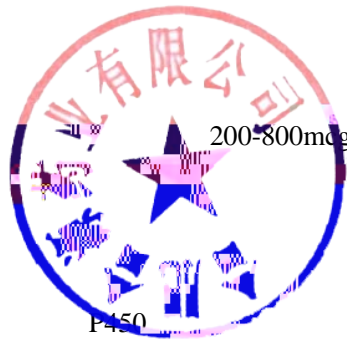
60mg 5

21

80mg.

5

**P450**



200-800mcg

P450

CYP1A2 CYP3A CYP2D6

CYP2C9

CYP3A -

60mg

12

CYP3A4

5mg

AUC 15%

CYP3A

CYP2D6 -

40 60mg

13

CYP2D6

50mg

CYP2D6

pH

pH

/

1400mg

QT



\_\_\_\_\_ -

6 18

4

ADHD

DSM-IV

/

ADHD

ADHD Rating Scale-IV-Parent Version

ADHDRS

/

intent-to-treat

ADHDRS

DSM-IV ADHD

1 8 18

N=297 8

0.5 1.2 1.8mg/kg/

ADHDRS

ADHD

1.8mg/kg/

1.2mg/kg/

0.5mg/kg/

2	6	16		N=171	6		
			1.5mg/kg/ ADHD			1.3mg/kg/ ADHDRS	
2	7	13		3 N=147	4 N=144	9	
2.0mg/kg/ ADHD					1.6mg/kg/ ADHDRS		
		12	12	17			
-			6-15				ADHD
1.2-1.8mg/kg/ N=81			10		4		DSM-IV ADHD N=124
							N=292
25%			CGI-ADHD-S	2			ADHDRS-IV-Parent
					8		CGI-ADHD-S
		2		ADHDRS-IV-Parent			90%
2	DSM-IV	ADHD		18			
			ADHD				
	30				CAARS	ADHD	
18	ADHD		CAARS		/		
			intent-to-treat				
2	10				5 N=280	6 N=256	
120mg/						95mg/	60

CAARS

ADHD

<42 42

/ ADHD

Ames

CHO

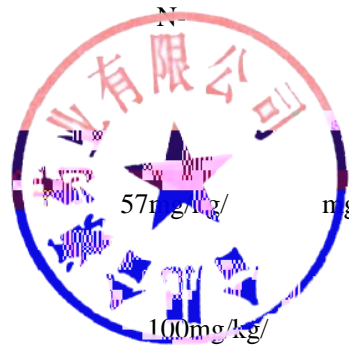
DNA

UDS

CHO

Ames

UDS



571 g/kg/

ng/m<sup>2</sup>

6

100mg/kg/

3

1

30mg/kg/

mg/m<sup>2</sup>

100mg/kg

23

AUC

AUC

3.3

0.4

50mg/kg/

mg/m<sup>2</sup>

6

2

10

2

1

25mg/kg

13mg/kg

2

10

40mg/kg/

mg/m<sup>2</sup>

5

20mg/kg/

150mg/kg/

mg/m<sup>2</sup>

17

2 47 458mg/kg/  
 8 5 mg/m<sup>2</sup>  
 AUC AUC 1.8 0.2  
 39 26 mg/m<sup>2</sup>  
 10  
 1 10 50mg/kg/ mg/m<sup>2</sup> 0.2 2  
 8 10 50mg/kg  
 10 50mg/kg 50mg/kg 50mg/kg  
 15 10 50mg/kg 50mg/kg 30 50mg/kg  
 60

CYP2D6 P450 2D6  
 5 CYP2D6  
 PM 7% 2% CYP2D6 PM  
 1% [ EM ] 10  
 AUC 5 24 CYP2D6

400 mg/kg  
 Cmax AUC  
 \_\_\_\_\_ -  
 1-2 Cmax EM PM 63% 94%

AUC Cmax 37% Tmax 3  
 Cmax 9%

0.85L/kg

98%

\_\_\_\_\_ - CYP2D6 EM

PM EM PM

AUC 10 C<sub>ss</sub> C<sub>max</sub> 5 CYP2D6 PM

CYP2D6

CYP2D6 CYP2D6

4-

4-

EM 1% PM 0.1% 4- CYP2D6

PM 4- P450 N-

CYP2C19 P450

EM 5% PM 45%

EM 0.35L/hr/kg 5.2

PM 0.03L/hr/kg 21.6 EM

PM AUC 10 C<sub>ss</sub> C<sub>max</sub> 5 EM 4-

N- 6 8 PM N-

34 40

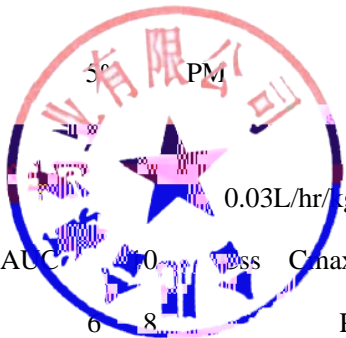
4- -0- 80%

17%

3%

/ 7 / 1 / 14 / 1 / 14 / 2 /

24



YBH12472021

H20213814

358

230088

0551-65368251 0551-65396630

0551-65396630

[www.heyuanpharm.com](http://www.heyuanpharm.com)

358

230088

0551-65368251 0551-65396630

0551-65396630

[www.heyuanpharm.com](http://www.heyuanpharm.com)

